



Tra-2α Polyclonal Antibody

Catalog No	YP-Ab-02128
Isotype	IgG
Reactivity	Human;Mouse
Applications	WB;IHC;IF;ELISA
Gene Name	TRA2A
Protein Name	Transformer-2 protein homolog alpha
Immunogen	The antiserum was produced against synthesized peptide derived from human TRA-2 alpha. AA range:221-270
Specificity	Tra-2α Polyclonal Antibody detects endogenous levels of Tra-2α protein.
Formulation	Liquid in PBS containing 50% glycerol, 0.5% BSA and 0.02% sodium azide.
Source	Polyclonal, Rabbit,IgG
Purification	The antibody was affinity-purified from rabbit antiserum by affinity-chromatography using epitope-specific immunogen.
Dilution	Western Blot: 1/500 - 1/2000. Immunohistochemistry: 1/100 - 1/300. Immunofluorescence: 1/200 - 1/1000. ELISA: 1/20000. Not yet tested in other applications.
Concentration	1 mg/ml
Purity	≥90%
Storage Stability	-20°C/1 year
Synonyms	TRA2A; Transformer-2 protein homolog alpha; TRA-2 alpha; TRA2-alpha; Transformer-2 protein homolog A
Observed Band	33kD
Cell Pathway	Nucleus .
Tissue Specificity	Cervix carcinoma,Epithelium,Hepatocyte,Lung,Testis,Uterus,
Function	function:Sequence-specific RNA-binding protein which participates in the control of pre-mRNA splicing.,PTM:Phosphorylated in the RS domains.,similarity:Belongs to the splicing factor SR family.,similarity:Contains 1 RRM (RNA recognition motif) domain.,subunit:Binds to A3 enhancer proteins SRp75, SRp55, SRp40 and SRp30.,
Background	This gene is a member of the transformer 2 homolog family and encodes a protein with several RRM (RNA recognition motif) domains. This phosphorylated nuclear protein binds to specific RNA sequences and plays a role in the regulation of pre-mRNA splicing. Alternatively spliced transcript variants have been found for this gene. [provided by RefSeq, Sep 2013],



matters needing attention

Avoid repeated freezing and thawing!

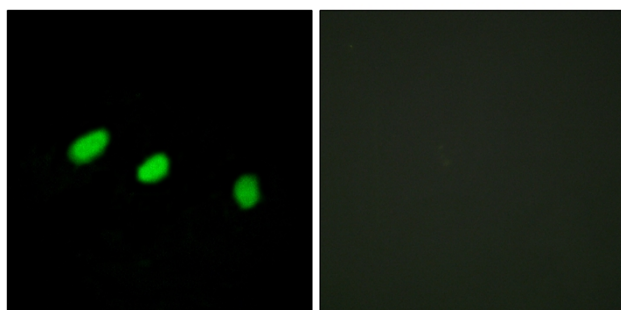
Usage suggestions

This product can be used in immunological reaction related experiments. For more information, please consult technical personnel.

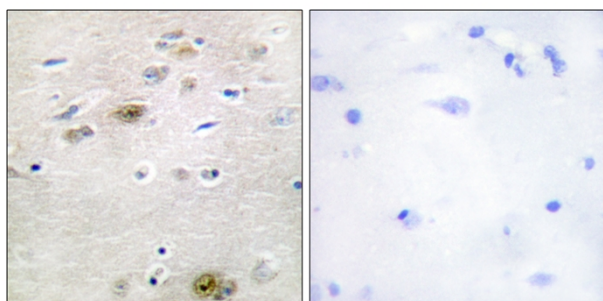
Products Images



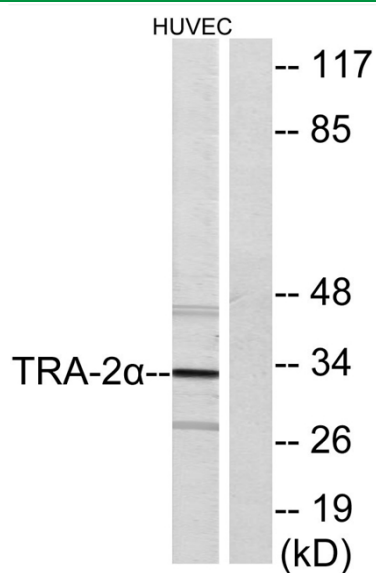
Western Blot analysis of various cells using Tra-2 α Polyclonal Antibody diluted at 1:500. Secondary antibody(catalog#:RS0002) was diluted at 1:20000 cells nucleus extracted by Minute TM Cytoplasmic and Nuclear Fractionation kit (SC-003, Inventbiotech, MN, USA).



Immunofluorescence analysis of HeLa cells, using TRA-2 alpha Antibody. The picture on the right is blocked with the synthesized peptide.



Immunohistochemistry analysis of paraffin-embedded human brain tissue, using TRA-2 alpha Antibody. The picture on the right is blocked with the synthesized peptide.



Western blot analysis of lysates from HUVEC cells, using TRA-2 alpha Antibody. The lane on the right is blocked with the synthesized peptide.